

VLC
made **SCOOPING INTERNAL DROPPER POST USER MANUAL**



PACKAGE INCLUDES

- DROPPER POST
- 24MM DROPBAR LEVER
- LEVER BARREL NUT
- SHIFTER CABLE WIRE
- CRIMPABLE CABLE END
- LONG CABLE HOUSING W/ CABLE ENDS
- SHORT CABLE HOUSING W/O CABLE ENDS
- BARREL ADJUSTER
- SHIFTER CABLE END BARREL ADAPTER

TOOLS NEEDED

- 2MM ALLEN WRENCHES
- 2.5MM ALLEN WRENCHES
- 3MM ALLEN WRENCHES
- 5MM ALLEN WRENCHES
- CABLE CUTTERS



STEP. 1
PLACING THE LC24
LEVER CLAMP UNDER
YOUR BRAKE SHIFTER



STEP. 2

INTERNALLY ROUTING YOUR LONGER CABLE HOUSING



STEP. 3

SET THE CABLE HOUSING INTO
THE BOTTOM OF THE DROPPER
POST WITHOUT CABLE WIRE
INSTALLED PUSH THE DROPPER
POST INTO THE SEAT TUBE
TO DESIRED SADDLE HEIGHT

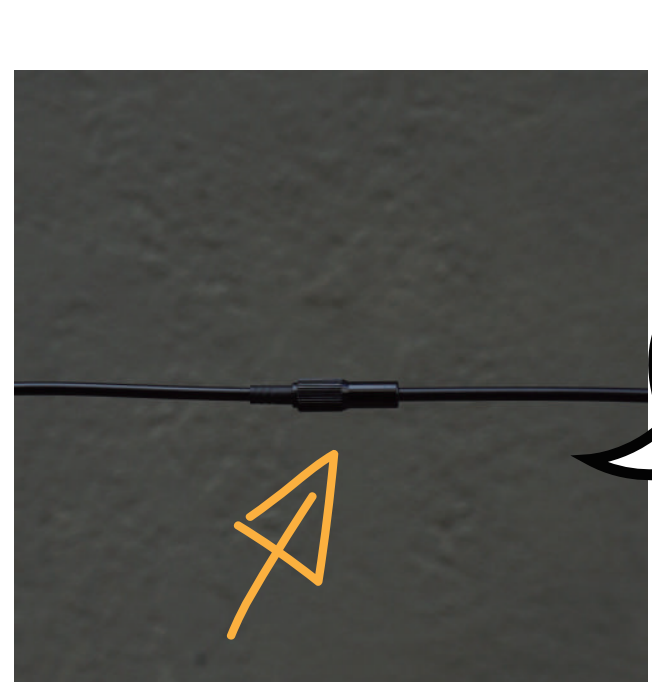
STEP. 4

WHILE PULLING CABLE OUT OF THE FRONT OF
THE FRAME AT THE SAME PACE
NOTE: BE CAREFUL NOT TO PULL THE CABLE TOO QUICKLY
AS IT CAN LOSE CONTACT WITH THE BOTTOM OF THE DROPPER.
MAKE YOUR MEASUREMENTS INACCURATE



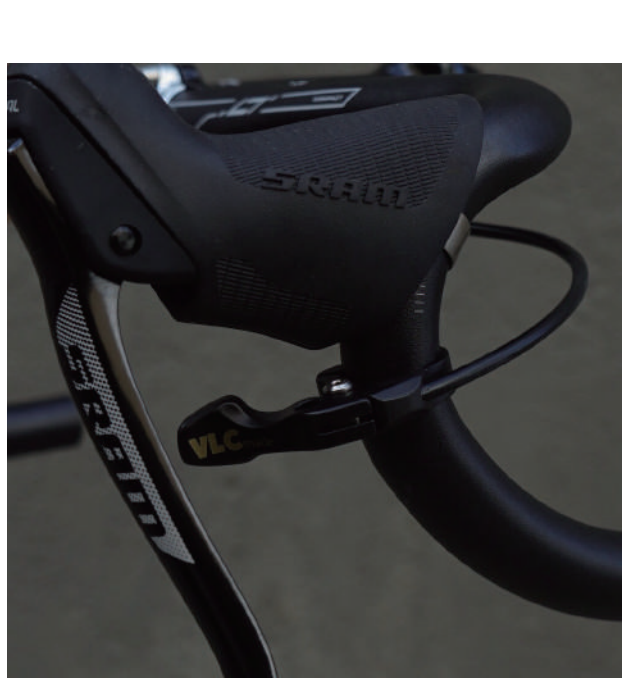
STEP. 5

CONNECT LONGER CABLE HOUSING
WITH BARREL ADJUSTER



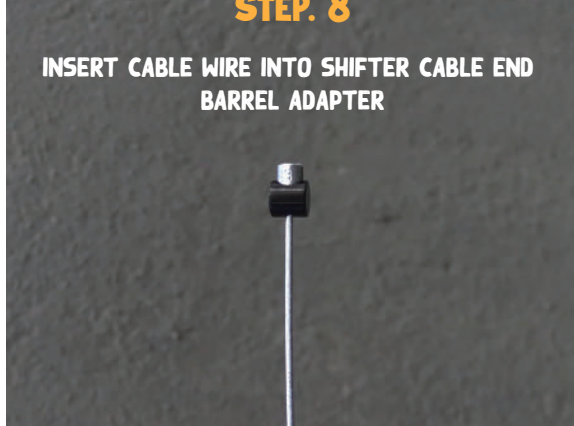
STEP. 6

CONNECT LEVER AND BARREL ADJUSTER WITH SHORTER CABLE
HOUSING (NO INNER WIRE) MEASURE THE NECESSARY AMOUNT
OF CABLE LENGTH YOU NEED AND CUT OFF THE REST
NOTE:
1. HOLD AND TAPE IN PLACE WHERE CABLE WILL BE
INSTALLED IN THE LEVER
2. REMEMBER THE EXCESS SLACK
3. TURN THE HANDLE BAR 90 DEGREE LEFT AND RIGHT TO
VERIFY YOU HAVE ENOUGH CABLE HOUSING LENGTH
4. ASSURE BARREL ADJUSTER WILL NOT BE WRAPPED BY BAR TAPE



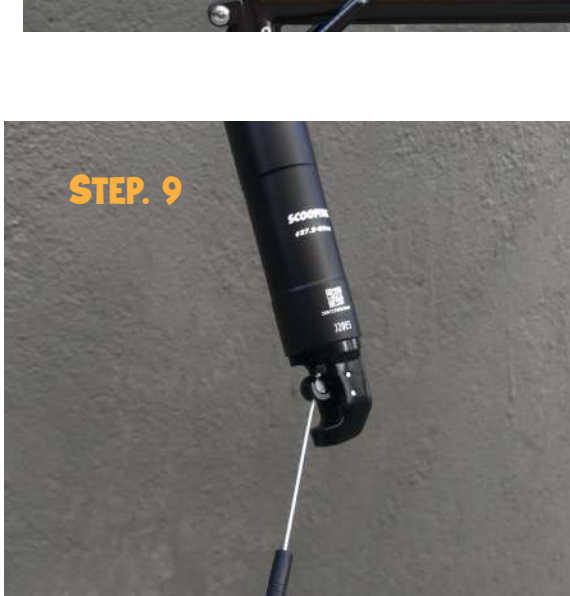
STEP. 7

REMOVE THE DROPPER FROM
THE FRAME WHILE PUSHING THE
CABLE HOUSING BACK THROUGH
THE BIKE



STEP. 8

INSERT CABLE WIRE INTO SHIFTER CABLE END
BARREL ADAPTER



INSERT CABLE WIRE WITH BARREL ADAPTER INTO
DROPPER POST ACTUATOR ROD

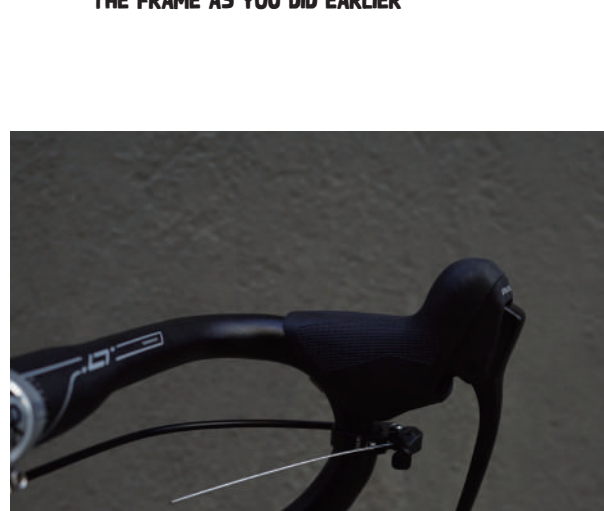
STEP. 10

PULL ACTUATOR ROD AND INSERT CABLE WIRE
THROUGH SLOT. SET CABLE HOUSING INTO THE
BOTTOM HOUSING HOLDER



STEP. 11

INSERT THE DROPPER INTO THE SEAT TUBE WHILE
PULLING THE CABLE HOUSING THROUGH
THE FRAME AS YOU DID EARLIER

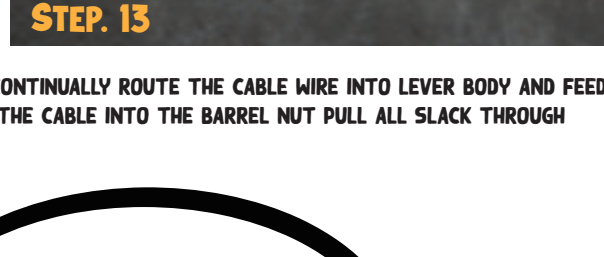


STEP. 12

PUT THE BARREL NUT INTO THE HOLE OF THE
LEVER ROTATE IT SO YOU CAN SEE THE HOLE

STEP. 13

CONTINUALLY ROUTE THE CABLE WIRE INTO LEVER BODY AND FEED
THE CABLE INTO THE BARREL NUT PULL ALL SLACK THROUGH



STEP. 14

ADJUST THE PLACEMENT OF YOUR
LEVER AND TIGHTEN THE CLAMP
BOLT TO 2NM



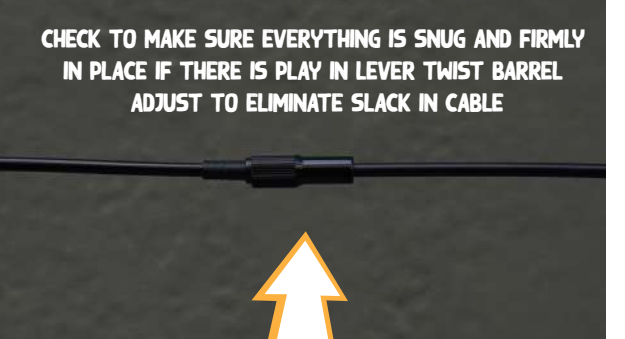
STEP. 16

CHECK TO MAKE SURE EVERYTHING IS SNUG AND FIRMLY
IN PLACE IF THERE IS PLAY IN LEVER TWIST BARREL
ADJUST TO ELIMINATE SLACK IN CABLE



STEP. 15

HOLDING THE CABLE WIRE TAUT & USE A 2MM
ALLEN WRENCH TO TIGHTEN THE PINCH BOLT



STEP. 17

CUT THE CABLE WIRE BEHIND THE LEVER & PLACE A CABLE CAP
PLACE THE END OF THE CABLE WIRE BEHIND THE CABLE HOLDER
ON THE BACK OF THE LEVER



**ENJOY YOUR RIDE WITH VLC
SCOOPING DROPPER POST !!**